

Performance Pretest: Flute

Directions: Perform the following piece of music, unaccompanied, doing your best playing. Your performance will be recorded and evaluated on the following criteria; posture (are you holding the instrument properly and in correct playing position), ability to maintain a steady beat, rhythm and pitch accuracy, as well as intonation, articulation, phrasing, and dynamics. Later in the school year, you will be given a posttest to measure your growth using these same standards. Remember to do the best performance you can.



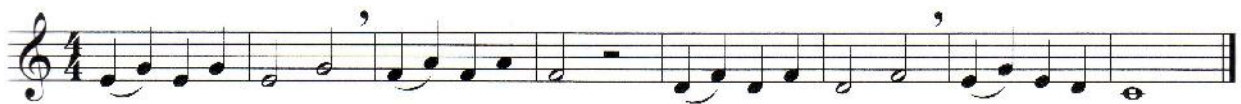
Performance Posttest: Flute

Directions: Perform the following piece of music, unaccompanied, doing your best playing. Your performance will be recorded and evaluated on the following criteria; posture (are you holding the instrument properly and in correct playing position), ability to maintain a steady beat, rhythm and pitch accuracy, as well as intonation, articulation, phrasing, and dynamics. Remember to do the best performance you can.



Performance Pretest: Clarinet

Directions: Perform the following piece of music, unaccompanied, doing your best playing. Your performance will be recorded and evaluated on the following criteria; posture (are you holding the instrument properly and in correct playing position), ability to maintain a steady beat, rhythm and pitch accuracy, as well as intonation, articulation, phrasing, and dynamics. Later in the school year, you will be given a posttest to measure your growth using these same standards. Remember to do the best performance you can.



Performance Posttest: Clarinet

Directions: Perform the following piece of music, unaccompanied, doing your best playing. Your performance will be recorded and evaluated on the following criteria; posture (are you holding the instrument properly and in correct playing position), ability to maintain a steady beat, rhythm and pitch accuracy, as well as intonation, articulation, phrasing, and dynamics. Remember to do the best performance you can.



Performance Pretest: Alto Saxophone

Directions: Perform the following piece of music, unaccompanied, doing your best playing. Your performance will be recorded and evaluated on the following criteria; posture (are you holding the instrument properly and in correct playing position), ability to maintain a steady beat, rhythm and pitch accuracy, as well as intonation, articulation, phrasing, and dynamics. Later in the school year, you will be given a posttest to measure your growth using these same standards. Remember to do the best performance you can.



Performance Posttest: Alto Saxophone

Directions: Perform the following piece of music, unaccompanied, doing your best playing. Your performance will be recorded and evaluated on the following criteria; posture (are you holding the instrument properly and in correct playing position), ability to maintain a steady beat, rhythm and pitch accuracy, as well as intonation, articulation, phrasing, and dynamics. Remember to do the best performance you can.



Performance Pretest: Trumpet

Directions: Perform the following piece of music, unaccompanied, doing your best playing. Your performance will be recorded and evaluated on the following criteria; posture (are you holding the instrument properly and in correct playing position), ability to maintain a steady beat, rhythm and pitch accuracy, as well as intonation, articulation, phrasing, and dynamics. Later in the school year, you will be given a posttest to measure your growth using these same standards. Remember to do the best performance you can.



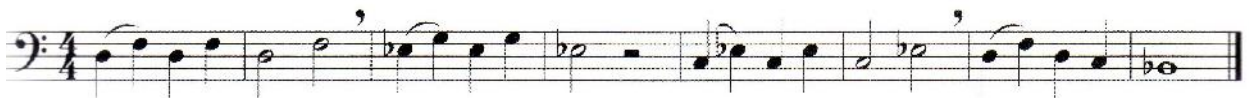
Performance Posttest: Trumpet

Directions: Perform the following piece of music, unaccompanied, doing your best playing. Your performance will be recorded and evaluated on the following criteria; posture (are you holding the instrument properly and in correct playing position), ability to maintain a steady beat, rhythm and pitch accuracy, as well as intonation, articulation, phrasing, and dynamics. Remember to do the best performance you can.



Performance Pretest: Trombone/Baritone

Directions: Perform the following piece of music, unaccompanied, doing your best playing. Your performance will be recorded and evaluated on the following criteria; posture (are you holding the instrument properly and in correct playing position), ability to maintain a steady beat, rhythm and pitch accuracy, as well as intonation, articulation, phrasing, and dynamics. Later in the school year, you will be given a posttest to measure your growth using these same standards. Remember to do the best performance you can.



Performance Posttest: Trombone/Baritone

Directions: Perform the following piece of music, unaccompanied, doing your best playing. Your performance will be recorded and evaluated on the following criteria; posture (are you holding the instrument properly and in correct playing position), ability to maintain a steady beat, rhythm and pitch accuracy, as well as intonation, articulation, phrasing, and dynamics. Remember to do the best performance you can.



Performance Pretest: Percussion

Directions: Perform the following piece of music, unaccompanied, doing your best playing. Your performance will be recorded and evaluated on the following criteria; posture (are you holding the instrument properly and in correct playing position), ability to maintain a steady beat, rhythm and pitch accuracy, as well as intonation, articulation, phrasing, and dynamics. Later in the school year, you will be given a posttest to measure your growth using these same standards. Remember to do the best performance you can.

The image shows a musical score for two parts: Flute (Flts.) and Percussion (S.D. and B.D.). The score is in 4/4 time and consists of eight measures. The Flute part is written on a treble clef staff with a key signature of one flat (B-flat). The Percussion part is written on a bass clef staff with a key signature of one flat. The Flute part starts with a quarter rest in the first measure, followed by a quarter note G4, a quarter note A4, a quarter note B4, and a quarter note C5. In the second measure, it has a quarter note B4, a quarter note A4, a quarter note G4, and a quarter note F4. The third measure has a quarter note E4, a quarter note D4, a quarter note C4, and a quarter rest. The fourth measure has a quarter rest, a quarter note B3, a quarter note A3, and a quarter note G3. The fifth measure has a quarter note F3, a quarter note E3, a quarter note D3, and a quarter note C3. The sixth measure has a quarter note B2, a quarter note A2, a quarter note G2, and a quarter note F2. The seventh measure has a quarter note E2, a quarter note D2, a quarter note C2, and a quarter note B1. The eighth measure has a quarter note A1, a quarter note G1, a quarter note F1, and a quarter note E1. The Percussion part consists of a steady 4/4 rhythm. It starts with a quarter note G2, a quarter note A2, a quarter note B2, and a quarter note C3. In the second measure, it has a quarter note B2, a quarter note A2, a quarter note G2, and a quarter note F2. The third measure has a quarter note E2, a quarter note D2, a quarter note C2, and a quarter note B1. The fourth measure has a quarter note A1, a quarter note G1, a quarter note F1, and a quarter note E1. The fifth measure has a quarter note D2, a quarter note C2, a quarter note B1, and a quarter note A1. The sixth measure has a quarter note G2, a quarter note F2, a quarter note E2, and a quarter note D2. The seventh measure has a quarter note F2, a quarter note E2, a quarter note D2, and a quarter note C2. The eighth measure has a quarter note E2, a quarter note D2, a quarter note C2, and a quarter note B1.

Performance Posttest: Percussion

Directions: Perform the following piece of music, unaccompanied, doing your best playing. Your performance will be recorded and evaluated on the following criteria; posture (are you holding the instrument properly and in correct playing position), ability to maintain a steady beat, rhythm and pitch accuracy, as well as intonation, articulation, phrasing, and dynamics. Remember to do the best performance you can.

The image shows a musical score for a percussion ensemble. It consists of four staves: Milt. (Melody), S. Cym. (Snare Drum), S.D. (Snare Drum), and B.D. (Bass Drum). The music is in common time (C) and features a melody with two circled first endings. The S. Cym. staff includes the instruction "with S.D. stick on bell" and "snare off". The S.D. and B.D. staves provide a rhythmic accompaniment. The score is marked with a red circle and a red arrow pointing to the instruction "with S.D. stick on bell".